

# Pneumatic Shutter

## Benefits:

- Seals the front window completely
- Can be used in combination with a Wind Curtain
- Compact size
- Robust construction
- For Salamander, Gecko, Orca Nautilus, Megalodon, Elephant
- For Chameleon and Stingray with modified mount possible



## Technical Details:

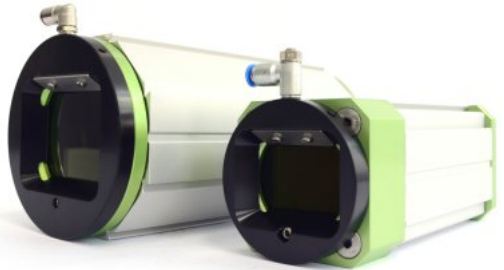


	For 2" Windows	For 3" Windows	For 4" Windows
<b>Pneumatic Connector</b>	4mm	4mm	4mm
<b>Max. Pressure</b>	10bar	10bar	10bar
<b>Seals</b>	EPDM	EPDM	EPDM
<b>Operating Temperature</b>	-10° to +60°C	-10° to +60°C	-10° to +60°C
<b>Operating Range</b>	Approx. 85mm	Approx. 110mm	Approx. 130mm
<b>Dimensions (l x w x h, flap open)</b>	240 x 74 x 64mm	267 x 96 x 64mm	287 x 96 x 64mm
<b>Weight</b>	285g	330g	395g
<b>Order Number</b>	50.200.010	50.200.021 + 6.041.145 for Stingray	50.200.030



## Benefits:

- Extends cleaning intervals
- Minimizes dust or light mist on the front window
- Higher efficiency with additional tube
- Combinable with Pneumatic Shutter
- Easy handling



## Technical Details:



Wind Curtain for 2" windows (old)	
Connector	4mm
Max. Pressure	10bar
Air Consumption	~160l/min@6bar
Operating Temp.	-10° to +60°C
Dimensions (l x w x h)	86 x 66 x 10mm
Weight	75g
Order Number	50.100.009
Order No. Tubus Holder Bracket	50.100.015 50.100.016 10.040.201

Wind Curtain for 2" windows	
Connector	4mm
Max. Pressure	10bar
Air Consumption	~160l/min@6bar
Operating Temp.	-10° to +60°C
Dimensions (l x w x h)	85 x 65 x 13mm
Weight	65g
Order Number	50.100.010
Order Number Tube 70x50	50.100.017

Wind Curtain for 3" windows	
Connector	4mm
Max. Pressure	10bar
Air Consumption	~250l/min@5bar
Operating Temp.	0 to +120°C
Dimensions (l x w x h)	110 x 95 x 13mm
Weight	115g
Order Number	50.100.011
Order Number Tube 100x50	50.100.018



## Benefits:

- Extends cleaning intervals
- High blowing force of 3,3N @ 5Bar
- Wide air stream at short distance
- Low air consumption and noise level
- Combinable with Meganova ringlight



<b>Pneumatic Connector</b>	6mm
<b>Max. Pressure</b>	10Bar
<b>Air Consumption</b>	333l/min
<b>Blowing Force</b>	3.3N @ 5Bar
<b>Noise Level (dB(A))</b>	82
<b>Dimensions (l x w x h)</b>	~85 x 56 x 50mm
<b>Weight</b>	155g

<b>Blowing Distance (mm)</b>	<b>Air Stream Width (mm)</b>
50	63
100	82
200	120
300	160
400	200
500	240
<b>Operating Temperature</b>	0° to + 70°C
<b>Order Number</b>	50.100.030

## Air Nozzle

### Benefits:

- Extends cleaning intervals
- Minimizes dust or light mist on the front window
- Easy handling



Air Nozzle for 20mm profile (Laser)	
<b>Connector</b>	4mm
<b>Max. pressure</b>	10bar
<b>Air consumption</b>	~160l/min@6bar
<b>Operating Temp.</b>	-10° to +60°C
<b>Dimensions (l x w x h)</b>	90 x 28 x 35mm
<b>Weight</b>	50g
<b>Order Number</b>	50.100.020

Air Nozzle for 30mm profile (Colibri)	
<b>Connector</b>	4mm
<b>Max. pressure</b>	10bar
<b>Air consumption</b>	~160l/min@6bar
<b>Operating Temp.</b>	-10° to +60°C
<b>Dimensions (l x w x h)</b>	115 x 44 x 36mm
<b>Weight</b>	80g
<b>Order Number</b>	50.100.023

Air Nozzle for 40mm profile	
<b>Connector</b>	4mm
<b>Max. pressure</b>	10bar
<b>Air consumption</b>	~160l/min@6bar
<b>Operating Temp.</b>	-10° to +60°C
<b>Dimensions (l x w x h)</b>	145 x 64 x 40mm
<b>Weight</b>	170g
<b>Order Number</b>	50.100.025