

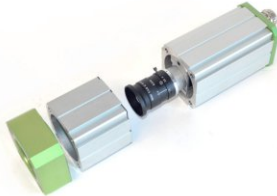
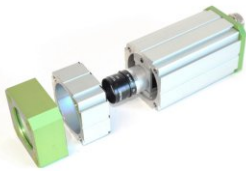
# Enclosure Extensions

## Benefits:

- Enables easier lens access
- Extension of standard enclosure length
- For Salamander and Orca enclosures
- Front or backside assembly possible
- 30mm or 60mm length
- IP protection class is conserved



## Technical Details:



30mm Salamander Extension	
Seal	NBR
Dimensions (w x h x l)	66 x 66 x 30mm d=55mm (inside)
Weight	116g
Order Number	15.015.030

60mm Salamander Extension	
Seal	NBR
Dimensions (w x h x l)	66 x 66 x 60mm d=55mm (inside)
Weight	234g
Order Number	15.015.060

60mm Salamander Side Exit M32	
Seal	NBR
Dimensions (w x h x l)	66 x 95 x 60mm d=55mm (inside)
Weight	346g
Order Number	15.015.061



30mm Extension for Orca, Mammoth and Chameleon	
Seal	EPDM
Dimensions d x l, without thread)	96 x 30mm 78mm (inner diameter)
Weight	158g
Order Number	15.030.030

60mm Extension for Orca, Mammoth and Chameleon	
Seals	EPDM
Dimensions (d x l, without thread)	96 x 60mm 78mm (inner diameter)
Weight	290g
Order Number	15.030.085



## Benefits:

- Precise re-positioning after camera disassembly
- The ring remains inside the enclosure and "remembers" the exact position
- For Salamander, Orca, Nautilus, Dolphin und Shark
- Easy handling



## Technical Details:



Position Ring for Feuer-/Salamander/Dolphin	
Dimensions (d x l, without screws)	55 x 13mm
Weight	26g
Order Number	20.020.003



Position Ring for Orca/Nautilus/Shark	
Dimensions (d x l, without screws)	85 x 10mm
Weight	38g
Order Number	20.040.002

## Benefits:

- Allows image acquisition at limited space
- Suitable for mid and long focal lenses
- Avoids costly prisms
- 4-6λ surface mirror, reflection >90%



## Technical Details:



Deflection Mirror	
Reflection (visible light)	>90%
Dimensions (l x w x h)	168 x 56 x 85mm
Weight	458g
Order Number	20.020.004

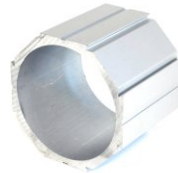
# Mounting Blocks

## Benefits:

- Robust and cost-effective camera mount
- Perfect where no overall IP protection is required
- Good heat dissipation
- Flexible mounting options
- Camera mount included



## Technical Details:



Salamander Mounting Block	
<b>Profile Material</b>	Anodized Aluminum
<b>Dimensions (w x h x l)</b> 60mm Block 100mm Block 164mm Block	66 x 66 x 60mm 66 x 66 x 100mm 66 x 66 x 164mm
<b>Weight</b> 60mm Block 100mm Block 164mm Block (without camera mount)	272g 426g 698g
<b>Order Number</b> 60mm Block 100mm Block 164mm Block (specify camera type)	15.010.060 15.010.100 15.010.164

Orca Mounting Block	
<b>Profile Material</b>	Anodized Aluminum
<b>Dimensions (w x h x l)</b>	96 x 96 x 80mm
<b>Weight</b> (without camera mount)	384g
<b>Order Number</b> (specify camera type)	15.030.080



Assembly example