



Benefits:

- For cameras up to 62 x 62mm cross section
- Robust construction
- High IP protection class
- Flexible camera positioning
- High chemical resistance
- Vibration-proof mounting
- Excellent heat dissipation
- Integration of ring lights possible
- Dome window option



Technical Details:

Max. Camera Size (w x h)	62 x 62mm (depending on edge radius)
Max. Lens Diameter	85mm (in profile) 78mm (in front lid)
Inner Length	130mm (Size S) 180mm (Size M) 250mm (Size L) 335mm (Size XL)
Enclosure Dimensions (w x h x l, without cable gland)	96 x 96 x 144mm (Size S) 96 x 96 x 194mm (Size M) 96 x 96 x 264mm (Size L) 96 x 96 x 349mm (Size XL)

Weight (without camera mount)	Approx. 1050g (Size S) Approx. 1200 (Size M) Approx. 1550g (Size L) Approx. 2050g (Size XL)
Enclosure Material	Anodized Aluminum
Enclosure Seals	EPDM

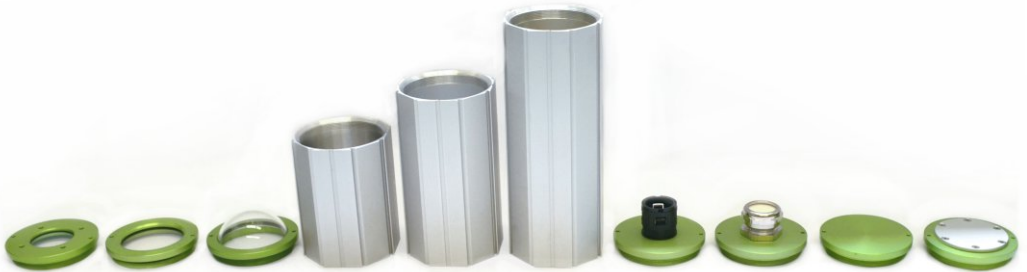
Cable Gland Aperture (max. connector size)	22mm (Rear Wall A) 26.5mm (Rear Wall C)
Cable Diameter	Self drilling (Rear Wall C)
Cable Gland Seal	TPE

Window Aperture	45mm (2" window) 65mm (3" window)
Standard Window	BK7, double sided ARC
2" IR Mirror	Order Number: 20.000.010
2" Sapphire	Order Number: 20.000.016
2" Germanium	Order Number: 20.000.017
3" Germanium	Order Number: 20.000.018
2" Acrylic, uncoated	Order Number: 20.000.027
2" Acrylic, double sided AR	Order Number: 20.000.029
3" Acrylic, double sided AR	Order Number: 20.000.033
Window Seal	EPDM

Protection Class	IP66 (Nema 4) IP67 (Nema 6)
-------------------------	--------------------------------



The mount guarantees excellent heat dissipation



2" Lid 3" Lid Dome Lid Profile S Profile M Profile L RearWall A RearWall C RearWall D RearWall E

Order Numbers (please specify the camera type for each order!):

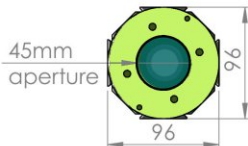
Product ID	Camera Type	Enclosure ID	2" Window	Rear Wall Type	3" Window	Length
2	X.X please specify camera type!	4	A: 0 C: 1 D: 2		A: 5 C: 6 D: 9	S: 130 M: 180 L: 250 XL: 335

Accessories:

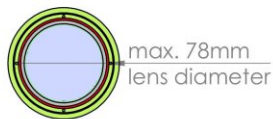
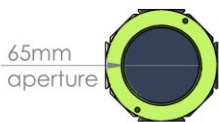
Product	Image	Order No.	Product	Image	Order No.	Product	Image	Order No.
Air Nozzle		50.100.025	Position Ring		20.040.002	Mounting Kit 1		5.010.000
2" Wind Curtain		50.100.010	Cooling Module		60.100.010	Mounting Kit 2		5.020.000
Tube Wind Curtain 2"		50.100.017	El. Heating Plate		70.100.010	Mounting Kit 6		5.060.000
3" Wind Curtain		50.100.011	Sun roof Size S		20.011.001	Mounting Kit 7		5.070.000
Shutter 2" Shutter 3"		50.200.020	Size M		20.011.002	Mounting Kit 9		5.090.000
		50.200.021	Size L		20.011.003			
Dome Window		20.040.015	Rear Wall E		20.040.014	Mounting Kit 10		5.100.000
30mm Extension		15.030.030	Deflection Mirror 90°		20.020.004	Mounting Kit 15		5.150.000
60mm Extension		15.030.085	Corrugated Tube 28mm		20.000.006	Mounting Kit 16		5.160.000
M72 Front Lid		20.040.018	Mounting Tool		90.000.004	Mounting Kit 17		5.170.000



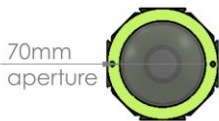
2" Front Lid



3" Front Lid



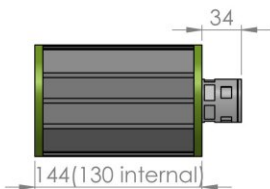
Dome Front Lid



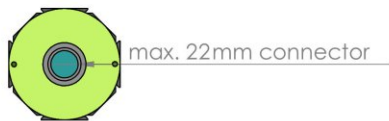
Profile



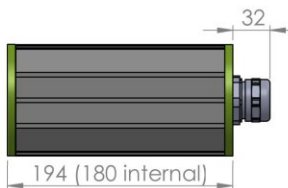
Size S



Rear Wall A



Size M



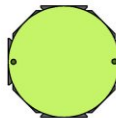
Rear Wall C



Size L



Rear Wall D



Size XL



Rear Wall E

