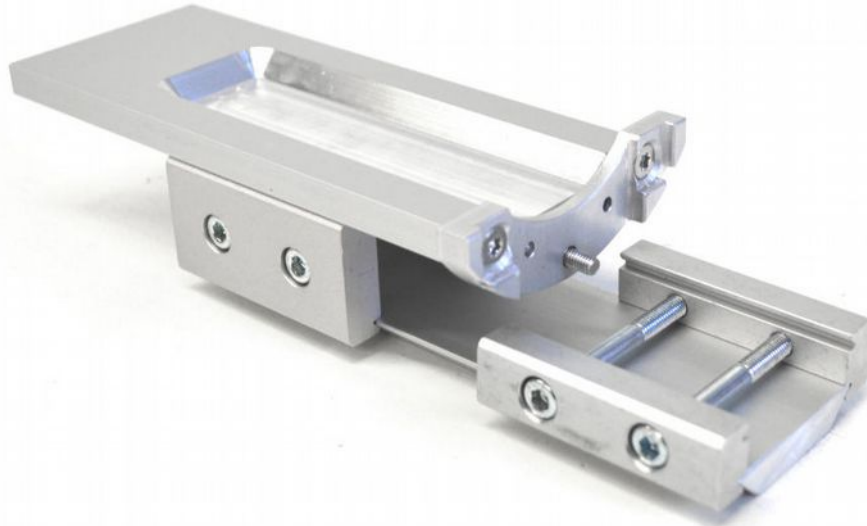


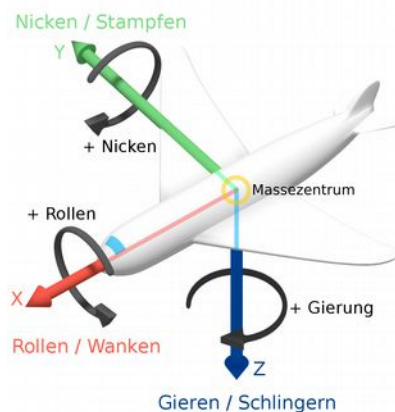
Camera-Alignment-Tool Orca Operation Manual



Included are the following parts: parallel slim bracket, parallel wide bracket, lower and upper mounting rail, TX countersunk screw. A Torx screwdriver T20 with at least 150mm blade length is required.

Application

In the Orca housing, the camera can be mounted in any position, but also at any angle around the optical axis. This makes it possible to compensate a tilted mounting or the rotation of the sensor in the camera. However, it is often necessary to mount the camera as parallel to the housing as possible. This can be done by controlling the camera image. However, the new Camera-Alignment-Tool allows fast and easy parallel camera mounting without image control with high accuracy (roll and yaw angle $\pm 0.5^\circ$, pitch angle $\pm 0.2^\circ$).



Source: Wikipedia, © Georg Eickert, Februar 2018

Camera mounting

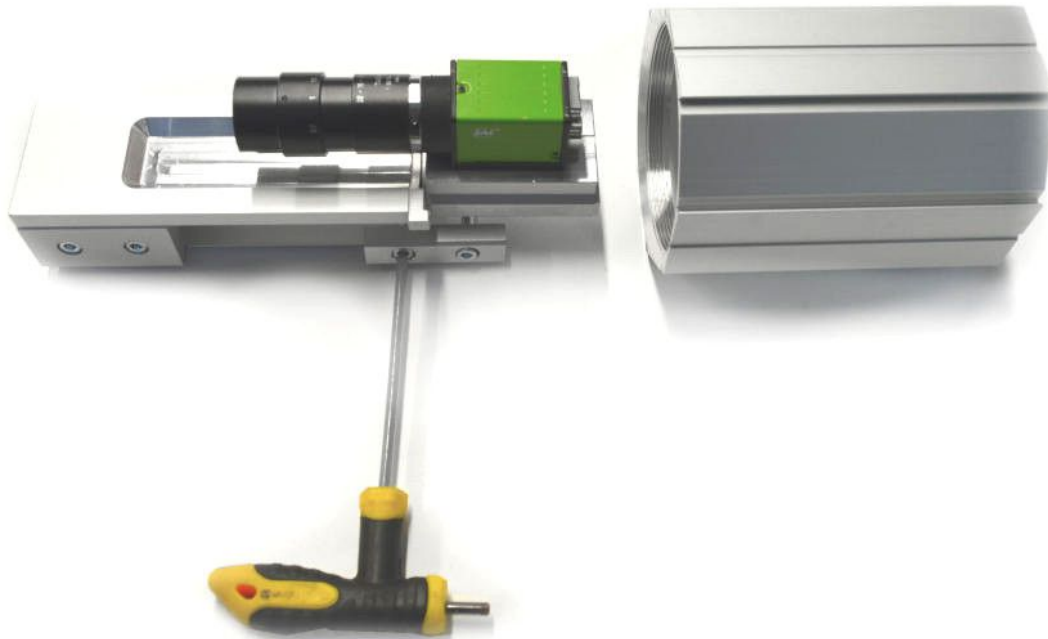
The camera should be mounted as straight as possible on the Heatguide block. Depending on the type of camera, it may be necessary to mount the Quicklock element directly, namely when it is screwed to the camera.



Screw the lower mounting rail to the heatguide block of the camera. This can be done from the front or back. When mounting from the front, lenses up to 54mm in diameter can remain on the camera. Please remove lenses with a larger diameter and refit after mounting the camera. A Torx screwdriver T20 with at least 150mm blade length is needed.



Lenses up to 54mm in diameter fit into the recess of the lower mounting rail



Loosen the Allen screws of the narrow parallel clamp so far that they can push them onto the dovetail of the housing profile.



Now insert the camera with the mounting rails into the housing profile. Position the camera so that the lens does not protrude out of the profile, otherwise it will touch the front panel during cover assembly.



Now slide the Quicklock (if not already mounted on the camera) onto the camera and fix the eccentric screws from the front and from behind. Now the camera is firmly clamped in the housing and the screw connection between alignment tool and Heatguide can be released again. Then you can loosen the screws of the parallel slim bracket and remove the alignment tool. For further assembly, please observe the general assembly instructions.

