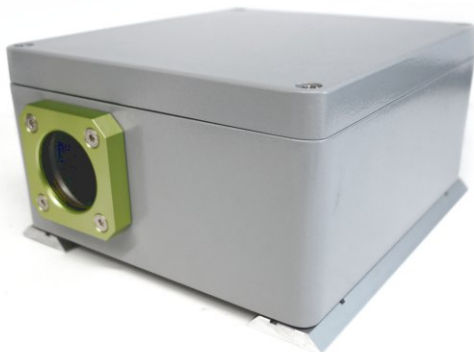




Benefits:

- Robust construction
- High IP protection class
- High chemical resistance
- Vibration-proof mounting
- Camera mount included
- BK7 or acrylic windows available
- Good heat dissipation thanks to heat conductive tape between camera and enclosure
- Easy assembly
- With Orca adapter also for wide angle lenses
- With Peltier cooling and soon in stainless steel available



Technical Details:

Dimensions (l x w x h, without cable gland and dovetail mounting plate)	230 x 200 x 111mm
Weight (without dovetail profiles)	Approx. 3000g

Window Materials	BK7, double sided ARC Acrylic, double sided ARC
Window Aperture	45mm
Window Seal	NBR

Colour	Light grey, RAL 7001
Enclosure Material	Powder Coated Aluminum
Enclosure Seals	Polyurethane

Options	<ul style="list-style-type: none">- Dovetail mounting plate- Pressure equalising valve for outdoor use
----------------	---

Protection Class	IP66 (Nema 4) IP67 (Nema 6)
-------------------------	--------------------------------

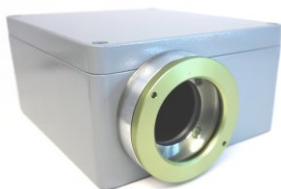
Cable Gland Aperture (max. connector size)	26.5mm (M32, GigE) 42mm (M50, Camera Link)
--	---

Cable Diameter	Self-drilling
-----------------------	---------------

Cable Gland Seal	TPE
-------------------------	-----



The mount guarantees good heat dissipation



Thanks to the Orca adapter lenses with shorter focal length are also usable



Chamäleon FX with dovetail profiles to use autoVimation Mounting Kits

Order Numbers:

Chameleon FX			
Enclosure Type	Order Number	Accessories	Order Number
FX10, M32 (GigE)	20.105.294	Surcharge 2" Acrylic ARC	20.000.049
FX10, M50 (Camera Link)	20.105.291	Surcharge 2" Acrylic FDA	20.000.032
FX17, M32 (GigE)	20.105.293	Dovetail Mounting Plates	20.105.995
FX17, M50 (Camera Link)	20.105.295		

Accessories:

Product	Image	Order No.	Product	Image	Order No.	Product	Image	Order No.
2"/3" Wind Curtain		50.100.010 50.100.011	30mm Extension		15.030.030	Mounting Kit 7		5.070.000
2"/3" Wind Curtain		50.100.017 50.100.018	60mm Extension		15.030.085	Mounting Kit 9		5.090.000
Orca adapter		15.030.002	Mounting tool		90.000.004	Mounting Kit 10		5.100.000
Surcharge 3" front lid		20.040.019	Mounting Kit 1		5.010.000	Mounting Kit 15		5.150.000
Surcharge M72 lid		20.040.018	Mounting Kit 2		5.020.000	Mounting Kit 16/16m		5.160.000 5.160.000m
Surcharge Dome lid		20.040.015	Mounting Kit 6		5.060.000	Mounting Kit 17/17m		5.170.000 5.170.000m



Benefits:

- Peltier cooling up to 30°C temperature difference
- 24V/DC power enables also e.g. supply via solar panels / batteries and so independent operation is possible
- High chemical resistance
- Easy and vibration-proof mounting
- Camera mount included
- High IP protection class



Technical Details FX Enclosure with Peltier Cooling:

Dimensions (l x w x h, without cable gland and tube)	230 x 200 x 180mm
Weight (without dovetail profiles)	~4900g

Ambient Temperature	0 - 70°C
Max. Temp. Difference without camera heat	30°C
Maximum Cooling Power	53,2W at dT=0°C
Input Voltage	24V/DC

Protection Class Enclosure	IP66 (Nema 4) IP67 (Nema 6)
Protection Class Fan	IP54



Order Numbers:

Chameleon FX with Peltier Cooling and in stainless steel version with IP69K hygienic design

Chameleon FX Peltier			
Enclosure Type	Order Number	Accessories	Order Number
FX10 Peltier, M32 (GigE)	20.106.294	Surcharge 2" Acrylic ARC	20.000.049
FX10 Peltier, M50 (C. Link) FX17 Peltier, M32 (GigE) FX17 Peltier, M50 (C. Link)	Please ask!	Surcharge 2" Acrylic FDA	20.000.032





Benefits:

- IP 69K hygienic design
- Stainless steel enclosure in AISI 316L
- High chemical resistance
- Easy and vibration-proof mounting
- Camera mount included
- Good heat dissipation
- Robust and compact design
- Hygienic assembly with special mounting kit to the machine possible



Technical Details:

Dimensions (l x w x h, without cable gland and tube)	220 x 210 x 108mm
Weight (without tube)	Ca. 4500g
Window Material	BK7, double sided ARC
Window Aperture	45mm
Window Seal	EPDM

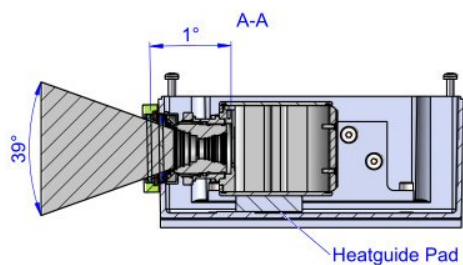
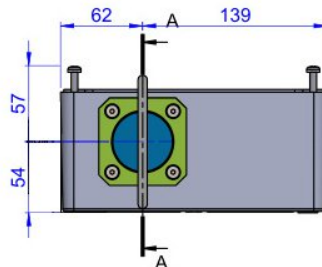
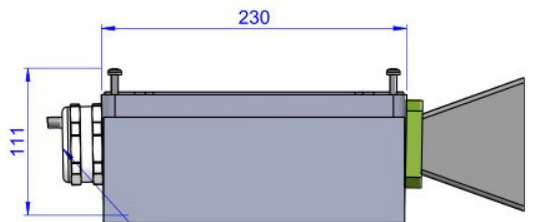
Protection Class	IP69K
Cable Gland Aperture (max. connector size)	19mm
Cable Gland Seal	TPE
Enclosure Material	Stainless Steel AISI 316L
Enclosure Seals	Silicone

Order Numbers:

Chameleon FX Hygienic IP69K			
Enclosure Type	Order Number	Accessories	Order Number
FX10 (38°, GigE)	20.105.296	Surcharge 2" Acrylic ARC	20.000.049
FX17 (38°, GigE)	20.105.297	Surcharge 2" Acrylic FDA	20.000.032
		Hygienic Mounting Kit	20.105.298
		26.5x21 PU Tube	80.007.003



Chameleon FX



Chameleon FX Hygienic

