

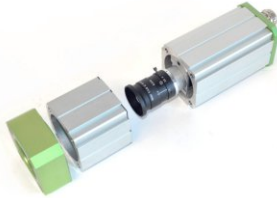
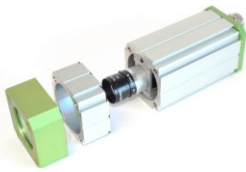
Enclosure Extensions

Benefits:

- Enables easier lens access
- Extension of standard enclosure length
- For Salamander and Orca enclosures
- Front or backside assembly possible
- 30mm or 60mm length
- IP protection class is conserved



Technical Details:



30mm Salamander Extension	
Seal	NBR
Dimensions (w x h x l)	66 x 66 x 30mm d=55mm (inside)
Weight	116g
Order Number	15.015.030

60mm Salamander Extension	
Seal	NBR
Dimensions (w x h x l)	66 x 66 x 60mm d=55mm (inside)
Weight	234g
Order Number	15.015.060

60mm Salamander Side Exit M32	
Seal	NBR
Dimensions (w x h x l)	66 x 95 x 60mm d=55mm (inside)
Weight	346g
Order Number	15.015.061



30mm Extension for Orca, Mammoth and Chameleon	
Seal	EPDM
Dimensions d x l, without thread)	96 x 30mm 78mm (inner diameter)
Weight	158g
Order Number	15.030.030

60mm Extension for Orca, Mammoth and Chameleon	
Seals	EPDM
Dimensions (d x l, without thread)	96 x 60mm 78mm (inner diameter)
Weight	290g
Order Number	15.030.085



Benefits:

- Use of Orca front lid possible for Salamander, Gecko and Chameleon FX enclosures
- Wider range of usable lenses
- Thanks to dome lid Fisheye lenses usable
- Filter option with M72 front lid
- Orca extensions usable



Technical Details:



Salamander-/Orca Adapter	
Seal	NBR
Dimensions (d x l)	96 x 22mm
Weight	126g
Order Number	15.030.001

Gecko-/Orca Adapter	
Seal	NBR
Dimensions (d x l)	96 x 19mm
Weight	114g
Order Number	15.030.002

Accessories:

Product	Image	Order No.	Product	Image	Order No.	Product	Image	Order No.
3" Frontdeckel		20.040.003	Dome-Frontdeckel		20.040.011	M72 Frontdeckel		20.040.017
2" Frontdecke		20.040.004	30mm Verlänger.		15.030.030	60mm Verlänger.		15.030.085

Position Rings and Deflection Mirror

Benefits:

- Precise re-positioning after camera disassembly
- The ring remains inside the enclosure and "remembers" the exact position
- For Salamander, Orca, Nautilus, Dolphin und Shark
- Easy handling



Technical Details:



Position Ring for Feuer-/Salamander/Dolphin	
Dimensions (d x l, without screws)	55 x 13mm
Weight	26g
Order Number	20.020.003



Position Ring for Orca/Nautilus/Shark	
Dimensions (d x l, without screws)	85 x 10mm
Weight	38g
Order Number	20.040.002

Benefits:

- Allows image acquisition at limited space
- Suitable for mid and long focal lenses
- Avoids costly prisms
- 4-6λ surface mirror, reflection >90%



Technical Details:



Deflection Mirror	
Reflection (visible light)	>90%
Dimensions (l x w x h)	168 x 56 x 85mm
Weight	458g
Order Number	20.020.004

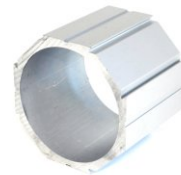


Benefits:

- Robust and cost-effective camera mount
- Perfect where no overall IP protection is required
- Good heat dissipation
- Flexible mounting options
- Camera mount included



Technical Details:



Salamander Mounting Block	
Profile Material	Anodized Aluminum
Dimensions (w x h x l) 60mm Block 100mm Block 164mm Block	66 x 66 x 60mm 66 x 66 x 100mm 66 x 66 x 164mm
Weight 60mm Block 100mm Block 164mm Block (without camera mount)	272g 426g 698g
Order Number 60mm Block 100mm Block 164mm Block (specify camera type)	15.010.060 15.010.100 15.010.164

Orca Mounting Block	
Profile Material	Anodized Aluminum
Dimensions (w x h x l)	96 x 96 x 80mm
Weight (without camera mount)	384g
Order Number (specify camera type)	15.030.080



Assembly example